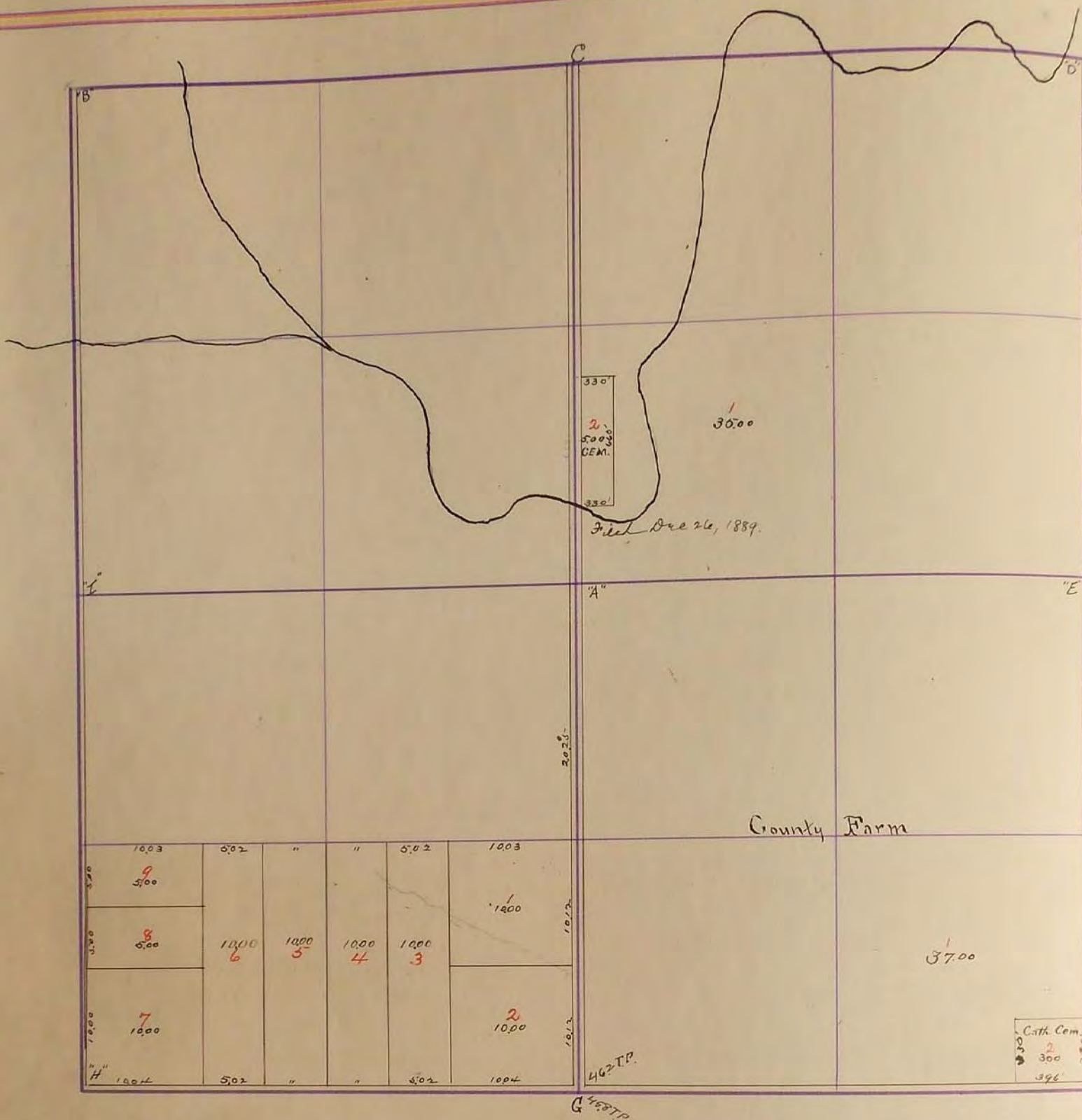


SURVEYOR'S RECORD

Section 10

Township 106

Range 111



June 24 - 1932

G. Stone T.P. 462 N.E.

G. Spike In Pavement. R.P.'s Nail in Cap in P.P. 67.18' S.W, Nail in Cap in. P.P. NW 65.93', Nail in Cap in P.P. N.E. 67.32' - Robert Knoff
10/16/76 Robert Knoff

"B" found stone with Iron above: R.P. N4C in P.P. N.E. 36.45: N4C brace Post North 32.12.

SURVEY No. 512

Section 10 Town 106 Range 41
C

462 T.P.

645.8 T.P.

FIELD NOTES.

June 24, 1932
G. Stone, T.P. 462 NE